



# NURTURING & INSPIRING INDEPENDENT GLOBAL LEARNERS



BEACONHOUSE  
NEWLANDS  
EARLY YEARS



# DEVELOPING YOUNG MINDS TO BE THE BRIGHTEST SPARK

It only takes a spark to get inquisitive minds inspired. At Beaconhouse Newlands Early Years (BNEY), we nurture every child's positive social, physical and emotional development, artistic expression and creativity.

We follow the British Early Years Foundation Stage (EYFS) and the Cambridge Primary 1 curriculum. Our programme is designed to support 21st Century skills through engaging the imagination, curiosity and critical thinking. We instill a love for learning through nurturing children's confidence to try new things and explore the world around them.



**Some see a child.  
We see future leaders.**



# SHEDDING LIGHT ON OUR INSPIRATION

Beaconhouse aims to provide quality education of an international standard. We aim for excellence through quality management, quality training and quality teaching, bringing benefits to our students, the community and the wider world.

Your child inspires us to help them reach their fullest potential!



## **CURRICULUM**

Providing a balanced curriculum which stimulates curiosity and which lays the foundation for all future learning



## **PERSONAL DEVELOPMENT**

Enhancing creativity, aesthetic, physical and emotional attributes



## **COMMUNITY INVOLVEMENT**

Building responsible, enterprising and independent individuals



## **CHARACTER DEVELOPMENT**

Nurturing confident, well-balanced children in a stimulating safe and happy environment



## **RELATIONSHIP BONDS**

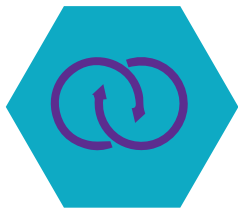
Experience positive social interactions and learn how to build positive relationships





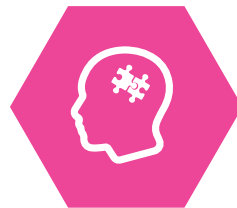
# OUR PHILOSOPHY SHINES THROUGH

Each child's mind is like a precious uncut gem. Our gold is to polish them to be creative and innovative in designing, exploring and discovering the world. Our child centered approach and programme provides each child with an opportunity for hands-on learning experiences in a safe and challenging environment, nurtured and guided by dedicated teachers. Every child has a learning journal to track their progress and development through our formative and summative assessment. The curriculum also enhances quality social interaction and promotes respect for diversity in our society. Your child will journey through the best and most effective teaching practices.



## INTEGRATED LEARNING

Our learning experiences are integrated and yet flexible around meaningful situations



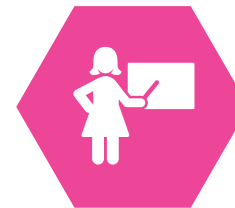
## ACTIVE LEARNER

Creative thinking and problem-solving skills will be developed



## INTERACTIVE LEARNING

We embed interactivity into our lessons for children to develop through experiential learning



## EDUCATORS' ROLES

Our teachers are co-partners in your child's learning




## PARENTAL INVOLVEMENT

We encourage parents to be involved in all aspects of their child's education



**Some see risk-taking.  
We see determination.**



# BNEY

## 7 BUILDING BLOCKS

Children can only excel when they have the right building blocks. BNEY focusses on 7 areas of learning and Enriched Curriculum guided by the 4 principles of Early Years Foundation Stage (EYFS) to create the perfect foundation for your child's learning experience

### 7 AREAS OF LEARNING & DEVELOPMENT




### THE EARLY YEARS FOUNDATION STAGE

The Four Principles of the EYFS are:





**Some think messy.  
We think creative.**



# BNEY LEARNER PROFILE

At the heart of our curriculum is our Learner Profile. This long term, holistic vision of education centres around your child and everything that we do. The learner profile is a set of values and characteristics we aim to develop in every child. Our teachers in school role model and teach these attributes through stories, learning and interactions with others. With this learning experiences, your child will not just grow but will apply to become a lifelong learner.



# Our students grow up to be...



**RESOLUTE**



**DIGITALLY INTELLIGENT**



**CREATIVE & INNOVATIVE**



**EMPATHETIC**



**ANALYTICAL**

## 9 CORE VALUES



**INQUISITIVE**



**GLOBALLY COMPETENT**



**ETHICAL**



**HOLISTIC & SELF-SUFFICIENT**



# 6 REASONS TO CHOOSE BNEY



## Educational Learning Programmes

- 3 languages: English, Bahasa Malaysia & Mandarin
- Emphasis in Mathematics & Science



## Stimulating Environment;

Library, Swimming/Wading pool, Play area, Atelier (Art Studio), Little Chef's Kitchen, Integrated Technology Supported Learning, STEM Room



## Extended Day Programme & Enrichment Programmes



## Qualified and trained educators



## International School Readiness Programme into our Beaconhouse International Schools



## Waiver of Registration Fees for enrolment into Beaconhouse Primary Schools



**Some see playfulness.  
We see exploration.**









# BNEY ENRICHMENT PROGRAMMES



**Tutorial  
Classes:  
Mandarin & BM**



**Tae Kwon Do**



**Agama**



**Arts & Craft**



**Dance**



**Robotics**



**Speech & Drama:  
English or  
Mandarin**

## SCHOOL HOURS

**1**

**Half Day Programme**  
8.30am to 12.30pm  
Little Tots,  
Nursery 1 & 2

**2**

**Extended Programme**  
8.30am to 2.30pm  
Little Tots,  
Nursery 1 & 2

**3**

**Reception & Primary 1**  
8.30am to 2.30pm

**4**

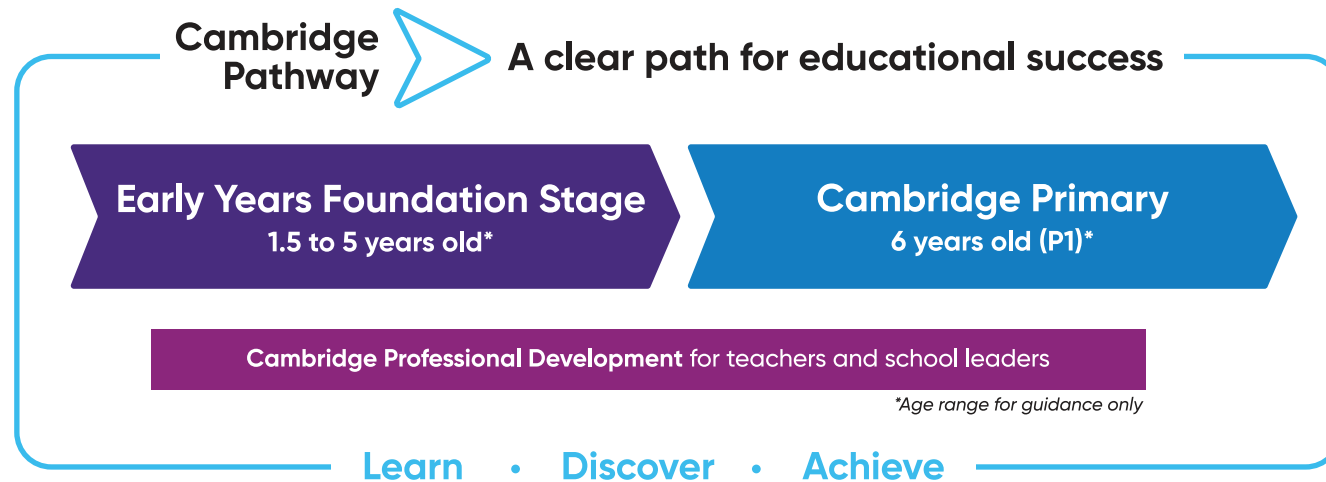
**Full Day Programme**  
8.30am to 6.00pm  
All Levels





# THE SEAMLESS TRANSITION INTO PRIMARY YEARS

We nurture children securely towards a seamless transition from the Early Years Foundation Stage to a more formal curriculum in Primary 1, enabling students to build upon their blocks of learning within a nurturing environment where genuine love for learning is cultivated.



## CAMBRIDGE CURRICULUM FOR PRIMARY 1 - LEARNING TOPICS

ENGLISH	MATHEMATICS	SCIENCE	ICT	GLOBAL PERSPECTIVES
<ul style="list-style-type: none"><li>● Writing &amp; Making Sentences</li><li>● Reading</li><li>● Speaking</li></ul>	<ul style="list-style-type: none"><li>● Numbers</li><li>● Addition and Subtraction</li><li>● Problem Solving</li><li>● Geometry</li><li>● Measurement</li></ul>	<ul style="list-style-type: none"><li>● Living and Non-Living</li><li>● Push and Pull</li><li>● Making Sound</li><li>● Type of Materials</li><li>● Plants</li></ul>	<ul style="list-style-type: none"><li>● Typing Skills</li><li>● Select Icons</li><li>● Use the search engine</li><li>● Create Images</li></ul>	<ul style="list-style-type: none"><li>● Understanding the World</li><li>● Explore Different Cultures</li></ul>

## BEACONHOUSE NEWLANDS EARLY YEARS PRESCHOOLS

### BEACONHOUSE NEWLANDS EARLY YEARS, BANGSAR

No. 2, Lorong Bukit Pantai 7,  
Off Lorong Bukit Pantai 8,  
Jalan Bukit Pantai, 59100 Bangsar,  
Wilayah Persekutuan, Kuala Lumpur.  
T : +603 2201 5116 | HP : 018 207 8008  
E : bangsar@bney.edu.my

### BEACONHOUSE NEWLANDS EARLY YEARS, U THANT, AMPANG

No. 23, Jalan Taman U Thant, Ampang Hilir,  
55000 Wilayah Persekutuan,  
Kuala Lumpur.  
T : +603 2181 2094 | HP : 018 217 8008  
E : uthant@bney.edu.my

### BEACONHOUSE NEWLANDS EARLY YEARS, SS2, PETALING JAYA

No. 37, Jalan SS2/44,  
47300 Petaling Jaya,  
Selangor Darul Ehsan.  
T : +603 7865 0453 | HP : 018 216 8008  
E : ss2@bney.edu.my

## BEACONHOUSE PRESCHOOLS

### BEACONHOUSE SUBANG JAYA

No. 25 & 27, Jalan SS19/2,  
47500 Subang Jaya,  
Selangor Darul Ehsan.  
T : +603 5632 9622 | HP : 018 206 8008  
E : subang-jaya@beaconhouse.edu.my

### BEACONHOUSE KLANG

No. 43, Jalan Ibus, Southern Park,  
41200 Klang, Selangor Darul Ehsan.  
T : +603 3371 2340 | HP : 018 215 8008  
E : klang@beaconhouse.edu.my

### BEACONHOUSE SARAH'S KLANG

No. 9 & 11, Lebuhraya Seraya,  
Taman Palm Grove,  
41200 Klang, Selangor Darul Ehsan.  
T : +603 3373 8117 | HP : 018 213 8008  
E : sarahs.klang@beaconhouse.edu.my

## PEIKEN ENGLISH-MANDARIN PRESCHOOLS

### PEIKEN MANDARIN-ENGLISH PUCHONG

No. 1, Jalan Puteri 10/17,  
Bandar Puteri, 47100 Puchong,  
Selangor Darul Ehsan.  
T : +603 8060 8775 | HP : 018 211 8008  
E : peiken@beaconhouse.edu.my

### PEIKEN MANDARIN-ENGLISH SRI PETALING

No. 32A, Lorong Pikrama 1,  
Bandar Baru Sri Petaling,  
57000 Wilayah Persekutuan, Kuala Lumpur.  
T : +603 9059 2133 | HP : 018 209 8008  
E : sri-petaling@beaconhouse.edu.my

## PRIVATE NATIONAL SCHOOLS

### BEACONHOUSE SRI MURNI

Lot No. 2854, Batu 9, Jalan Cheras,  
43200 Cheras, Selangor Darul Ehsan.  
T : +603 9075 1662 / 1663 | HP : 018 227 8008  
E : sri-murni@beaconhouse.edu.my

### BEACONHOUSE SRI LETHIA

No. 109, Jalan Limau, Off Jalan Istana,  
41000 Klang, Selangor Darul Ehsan.  
T : +603 3373 3771 | HP : 018 224 8008  
E : sri-lethia@beaconhouse.edu.my

## INTERNATIONAL SCHOOLS

### BEACONHOUSE SRI INAI

Lot No. 314, Jalan Jenjarum, Off Jalan SS23/6, Taman SEA,  
47400 Petaling Jaya, Selangor Darul Ehsan.  
T : +603 7804 6025 | HP : 018 221 8008  
E : inai-international@beaconhouse.edu.my

## A BEACONHOUSE PARTNERSHIP

### REIGATE GRAMMAR SCHOOL KUALA LUMPUR

Jalan Kajang Utama, Seksyen 2,  
Kajang 2, 43000 Kajang, Selangor Darul Ehsan  
HP : 018 223 8008  
E : info@reigategrammar.edu.my



BEACONHOUSE  
NEWLANDS

EARLY YEARS

[www.bney.edu.my](http://www.bney.edu.my)

MALAYSIA • PAKISTAN • OMAN • UAE • PHILIPPINES • THAILAND